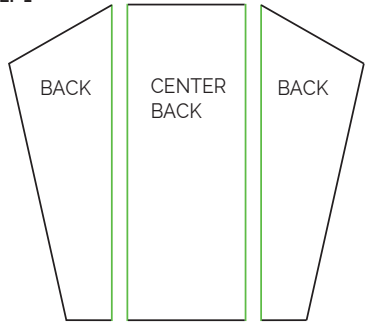


FABRIC > LUX LINEN  
 PAPER PATTERN 1:10

1,35 m WIDTH x 2,5 m LENGTH  
 53 in WIDTH x 100 in LENGTH

- - - - FOLDING LINE  
 ——— CUTTING LINE

**STEP 1**



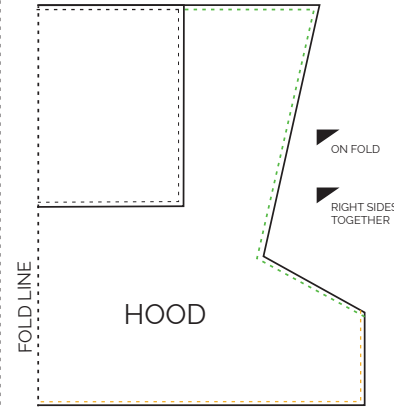
- 1. REGULAR STITCH — SEAM ALLOWANCE 2 cm
- 2. DOUBLE FOLD IN 2 x 1 cm > EDGE STITCH



- 3. REGULAR STITCH — SEAM ALLOWANCE 2 cm
- 4. TURN OVER (FOLD LINE)
- 5. EDGE STITCH

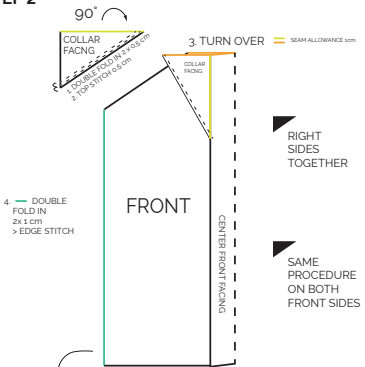
**STEP BY STEP  
PATTERN INSTRUCTION**

**STEP 6**



- 1. - - STITCH SEAM ALLOWANCE 2 cm
- 2. LEFT SIDE > DOUBLE FOLD IN > EDGE STITCH
- 3. - - DOUBLE FOLD IN 2 x 1 cm
- 4. - - EDGE STITCH

**STEP 2**



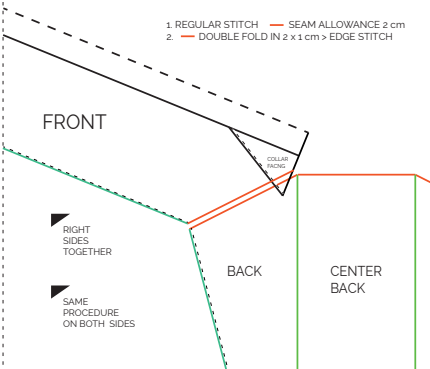
- 1. COLLAR FACING — SEAM ALLOWANCE 1 cm
- 2. COLLAR FACING — SEAM ALLOWANCE 1 cm
- 3. TURN OVER — SEAM ALLOWANCE 1 cm

- 4. DOUBLE FOLD IN 2 x 1 cm > EDGE STITCH



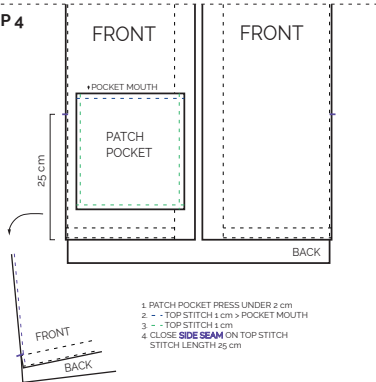
- 5. PRESS UNDER 1 cm
- 6. TURN OVER "FRONT HEM FACING" WITH "FRONT" & "CENTER FRONT FACING" — SEAM ALLOWANCE 1 cm
- 7. TOP STITCH 1 cm

**STEP 3**



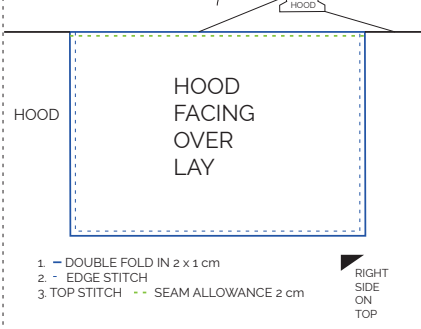
- 1. REGULAR STITCH — SEAM ALLOWANCE 2 cm
- 2. DOUBLE FOLD IN 2 x 1 cm > EDGE STITCH

**STEP 4**



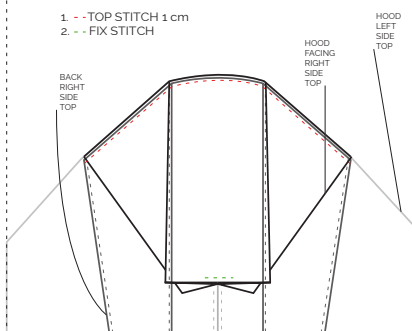
- 1. PATCH POCKET PRESS UNDER 2 cm
- 2. - - TOP STITCH 1 cm > POCKET MOUTH
- 3. - - TOP STITCH 1 cm
- 4. CLOSE SIDE SEAM ON TOP STITCH STITCH LENGTH 25 cm

**STEP 5**



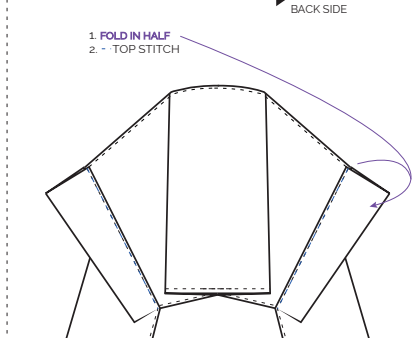
- 1. - - DOUBLE FOLD IN 2 x 1 cm
- 2. - - EDGE STITCH
- 3. TOP STITCH - - SEAM ALLOWANCE 2 cm

**STEP 7**



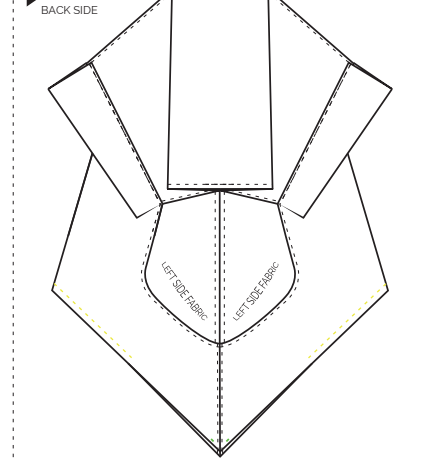
- 1. - - TOP STITCH 1 cm
- 2. - - FIX STITCH

**STEP 8**



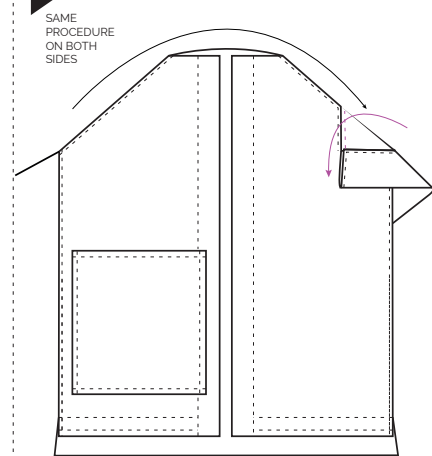
- 1. FOLD IN HALF
- 2. - - TOP STITCH

**STEP 9**



- 1. FOLD THE EDGES
- 2. TOP STITCH — SEAM ALLOWANCE 3 cm STITCH LENGTH 17 cm
- 3. FIX STITCH — > TWO CORNER EDGES

**STEP 10**



- 1. SAME PROCEDURE ON BOTH SIDES

- 1. FOLD THE EDGES OF THE HOOD OVER THE FRONT SHOULDER
- 1. - - FIX STITCH ON TOP OF TOP STITCH

**STEP BY STEP  
HAVE FUN  
CREATING**



Mirrored Pyramids by  
Tugba Topcu